

# GAVOTTES, BOURRÉE AND GIGUE

FROM ORCHESTRAL SUITE No. 3

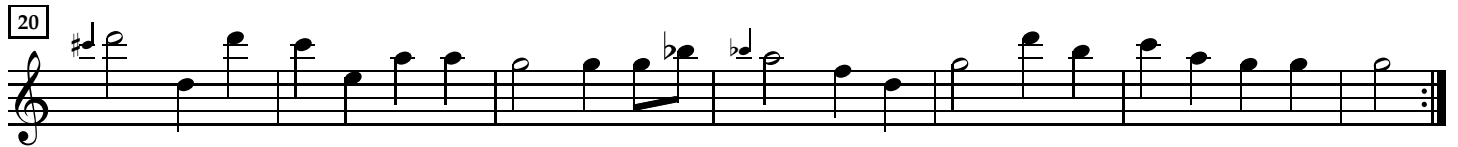
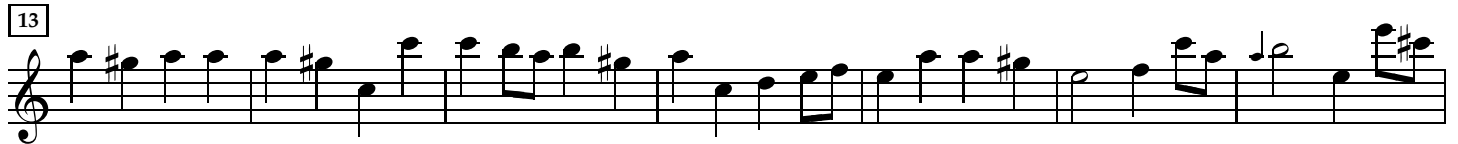
BWV 1068

Arranged for Recorders by R. D. Tennent

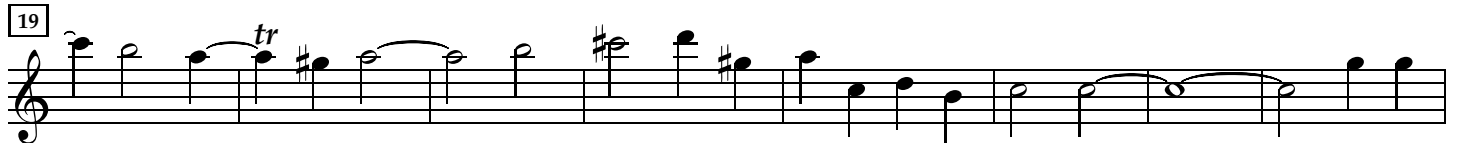
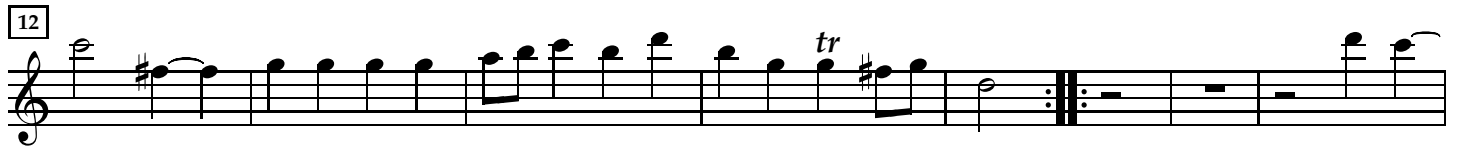
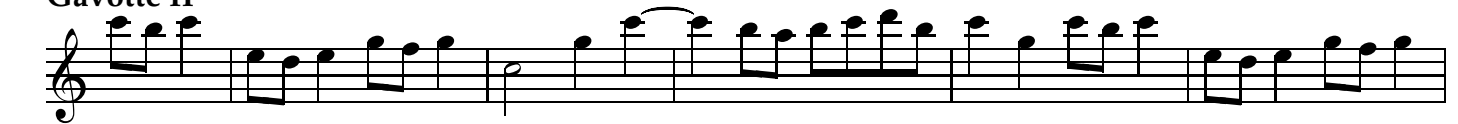
J. S. Bach (1685–1750)

## Gavotte I

Alto Recorder



## Gavotte II



Gavotte I da capo

# Bourrée

Musical score for Bourrée, measures 1-27. The piece is in 3/4 time and G major. The notation consists of five staves of music. Measure numbers 4, 8+, 15, 21, and 27 are indicated in boxes at the start of their respective staves. The score includes various rhythmic patterns, including eighth and sixteenth notes, and rests. A repeat sign is present at the end of the piece.

# Gigue

Musical score for Gigue, measures 1-18. The piece is in 6/8 time and G major. The notation consists of four staves of music. Measure numbers 6, 12, and 18 are indicated in boxes at the start of their respective staves. The score includes various rhythmic patterns, including eighth and sixteenth notes, and rests. A repeat sign is present at the end of the piece.

24+

31

37

43

49

55

61

66